



# IMAGE HOMES

*"Building Excellence Since 1986"*

[www.imagehomesidaho.com](http://www.imagehomesidaho.com)

208.284.2181

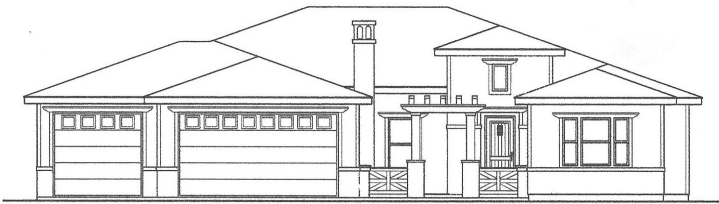


McMillan Rd. West of Eagle Rd.

Just West of Locust Grove

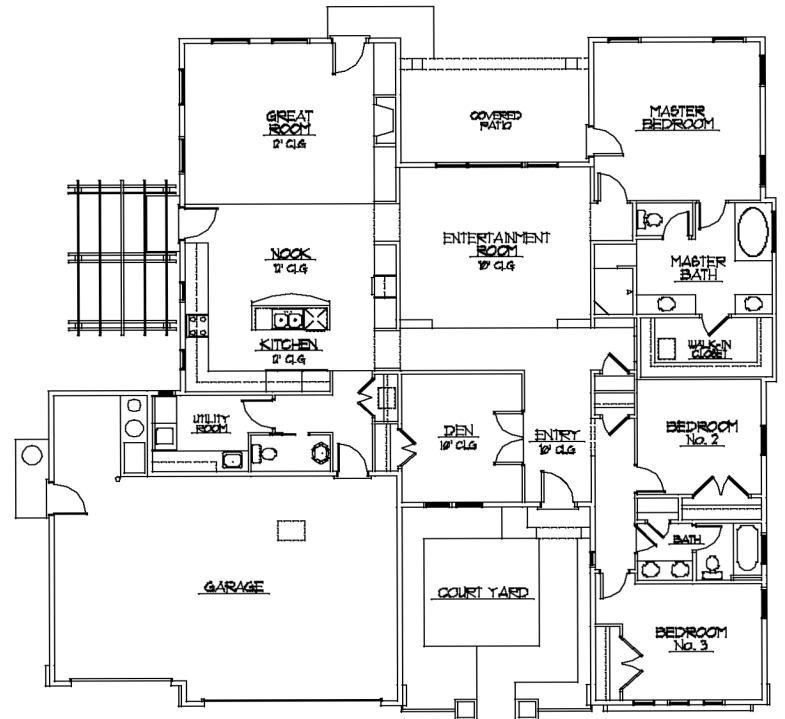
## THE CASTLEWOOD

2,468 sq. ft. ▪ 3 to 4 Bedroom ▪ 2.5 Bath ▪ 3 Car Garage ▪ Prairie Style Courtyard Home ▪ Low-Traffic Street



### CUSTOM FEATURES

- Single story living at it's best!
- Classic Prairie Style Architecture
- Worry free 2 Year Builders Warranty
- Fabulous Kitchen & Great Room w/ 12' ceiling
- Inviting courtyard entry
- 3 patio areas for entertaining
- Upgraded interior detailing
- Relaxing Master Bath with walk-in shower
- Generous use of windows and natural light
- Build this wonderful home in 90 days or less on your lot or ours. We'll include options such as a RV Garage or Bonus Room



64' Wide 64' Deep

**CUSTOM DESIGN OPTIONS:** A full array of design opportunities and upgraded specifications are available to help you customize your IMAGE HOME, built on your lot or ours. In an effort to continually improve our product, we reserve the right to make changes to floor plans, specifications, materials, features, & pricing. All square footages are approximate. All renderings are artist's conception and may appear differently than the finished home. Please consult with the builder for the most current information.

**BROKER COOPERATION WELCOME!** IMAGE HOMES recognizes the value of a Professional Realtor and wants to welcome and encourage Real Estate Agents and their clients to use us as a tool in finding the perfect home. Our hope is to develop a positive working relationship with both you and your client to make the process of purchasing an IMAGE HOME is an enjoyable experience.

