



IMAGE HOMES

"Building Excellence Since 1986"

www.imagehomesidaho.com

208.284.2181



McMillan Rd. West of Eagle Rd.

Just West of Locust Grove

THE MARTINIQUE 2500

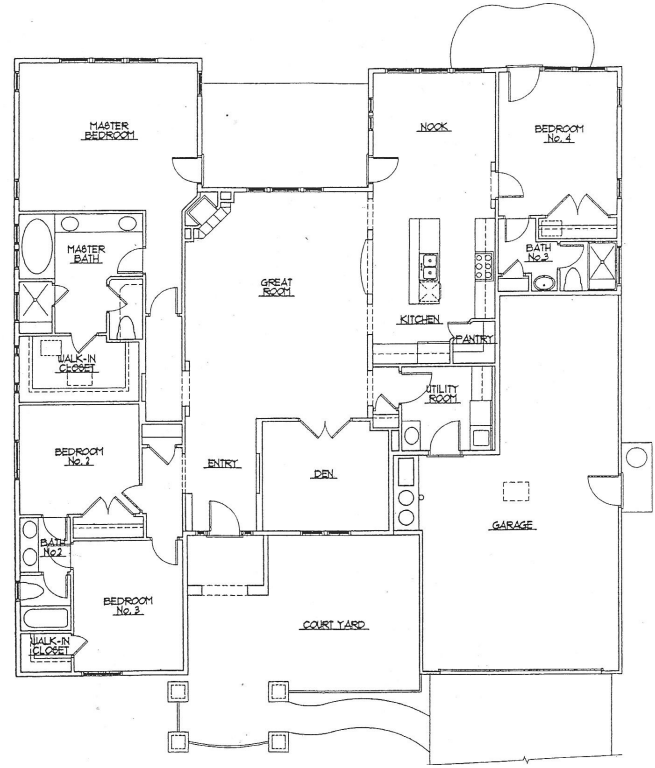
2,506 sq. ft. ▪ 3 to 4 Bedroom ▪ 2.5 to 3 Bath ▪ 3 Car Garage ▪ French Country Courtyard Home ▪ Two Year Warranty



681 E. San Pedro Street, Meridian

CUSTOM FEATURES

- Single story living at it's best with great curb appeal!
- Classic French Country Architecture
- Worry free 2 Year Builders Warranty
- Fabulous Kitchen & Great Room w/ 12' ceiling
- Wonderful free-flowing floor plan
- Inviting open courtyard entry
- Upgraded interior detailing
- Optional Full stucco exterior and finished garage
- Rich alder cabinetry with elegant granite counters
- Relaxing Master Bath with walk-in shower
- Generous use of windows and natural light
- 3 car garage
- Fully landscaped, fenced and rain gutters
- Build this wonderful home in 90 days or less on your lot or ours. We'll include options such as a RV Garage or Bonus Room



58' Wide 64' Deep

CUSTOM DESIGN OPTIONS: A full array of design opportunities and upgraded specifications are available to help you customize your IMAGE HOME, built on your lot or ours. In an effort to continually improve our product, we reserve the right to make changes to floor plans, specifications, materials, features, & pricing. All square footages are approximate. All renderings are artist's conception and may appear differently than the finished home. Please consult with the builder for the most current information.

BROKER COOPERATION WELCOME! IMAGE HOMES recognizes the value of a Professional Realtor and wants to welcome and encourage Real Estate Agents and their clients to use us as a tool in finding the perfect home. Our hope is to develop a positive working relationship with both you and your client to make the process of purchasing an IMAGE HOME is an enjoyable experience.

