



IMAGE HOMES

"Building Excellence Since 1986"

www.imagehomesidaho.com



McMillan Rd. West of Eagle Rd.

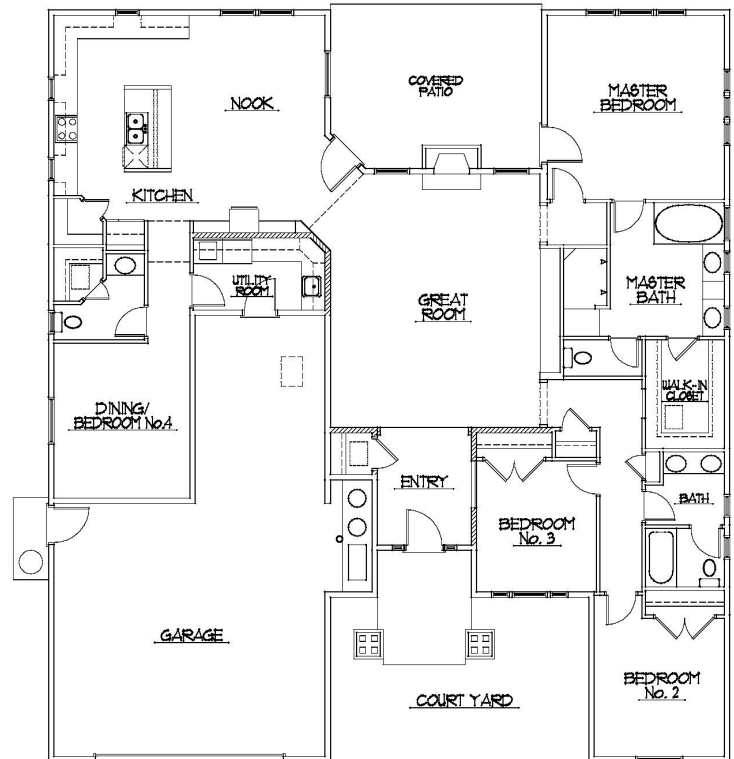
Just West of Locust Grove

The Aspen Creek

2,390 sq. ft. ▪ 4 Bedrooms ▪ 2.5 to 3 Baths ▪ Flex Room Options ▪ 3 to 4 Car Garage



Custom Mountain Craftsman Design



813 E. Segundo Street, Meridian

CUSTOM FEATURES

- Charming Mountain Craftsman single story
- Worry free 2 Year Builders Warranty
- Large Great Room with 11' ceiling
- Rich alder cabinetry with elegant granite counters
- Large covered rear patio
- Upgraded interior detailing
- Optional 4th car garage or Media Room
- Generous use of windows and natural light
- Fully landscaped, fenced and rain gutters
- Large Master Bath with walk-in shower

58' Wide

64' Deep

CUSTOM DESIGN OPTIONS: A full array of design opportunities and upgraded specifications are available to help you customize your IMAGE HOME, built on your lot or ours in 90 days or less. We will include options such as an RV Garage or upstairs Bonus Room. In an effort to continually improve our product, we reserve the right to make changes to floor plans, specifications, materials, features, & pricing. All square footages are approximate. All renderings are artist's concept. Please consult with the builder for the most current information.

BROKER COOPERATION WELCOME! IMAGE HOMES recognizes the value of a Professional Realtor and wants to welcome and encourage Real Estate Agents and their clients to use us as a tool in finding the perfect home. Our hope is to develop a positive working relationship with both you and your client to make the process of purchasing an IMAGE HOME as enjoyable and memorable as possible.

