



IMAGE HOMES

"Building Excellence Since 1986"

www.imagehomesidaho.com

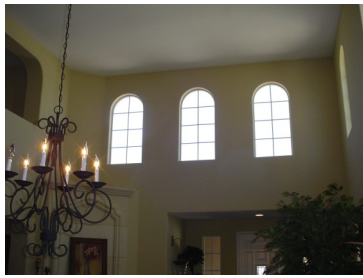
208.284.2181



McMillan Rd. West of Eagle Rd.
Just West of Locust Grove

The Andalusian

2,750 sq. ft. ▪ 4 to 5 Bedroom ▪ 2.5 to 3.5 Baths ▪ Optional Main Level Master ▪ 3 to 4 Car Garage



Dramatic Interior Design

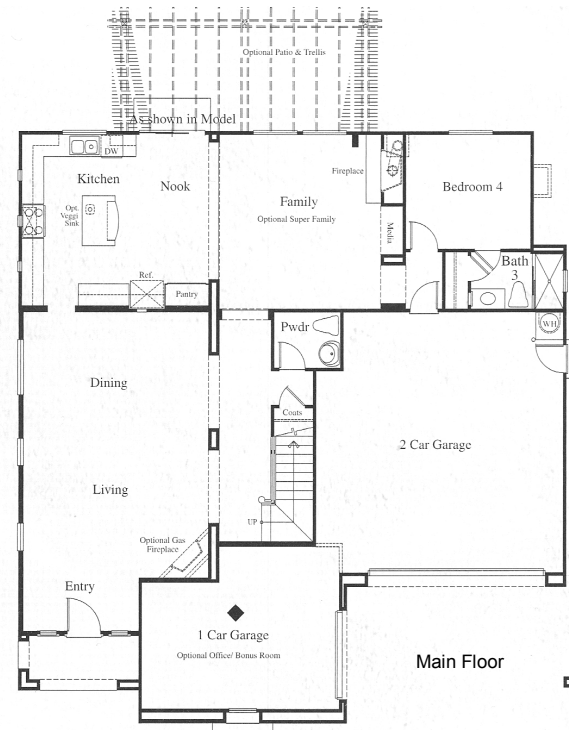
Fabulous Mediterranean Curb Appeal

CUSTOM FEATURES

- Great Home for entertaining
- Elegant iron stairway and arches
- Worry free 2 Year Builders Warranty
- Fabulous Kitchen & Family Room
- Flex rooms for your specific needs
- Upgraded interior detailing
- Optional 4th car Garage or Office
- Loft or option 5th Bedroom
- Generous amounts of natural light
- Optional downstairs Master Suite
- Fully landscaped



Width: 50' - 62'
Depth: 52'



CUSTOM DESIGN OPTIONS: A full array of design opportunities and upgraded specifications are available to help you customize your IMAGE HOME, built on your lot or ours in 90 days or less. We will include options such as an RV Garage or upstairs Bonus Room. Call today for a no-obligation appointment to see how we can customize this wonderful home to your liking. In an effort to continually improve our product, we reserve the right to make changes to floor plans, specifications, materials, features, & pricing. All square footages are approximate. All renderings are artist's concept. Please consult with the builder for the most current information.

BROKER COOPERATION WELCOME! IMAGE HOMES recognizes the value of a Professional Realtor and wants to welcome and encourage Real Estate Agents and their clients to use us as a tool in finding the perfect home. Our hope is to develop a positive working relationship with both you and your client to make the process of purchasing an IMAGE HOME as enjoyable and memorable as possible.

